

Introduction

- ❖ Patient and family engagement is key to achieving a health care system that is responsive to patients, and improving patient outcomes.
- ❖ Resources to practically embrace authentic patient and family engagement in kidney care and research are scarce.

Aim

To co-create a framework to guide patient and family engagement activities in the provincial renal network

Methods

- ❖ A working group of 16 patient partners and health professionals was formed to develop the provincial patient and family engagement framework.
- ❖ An environmental scan was conducted to inform the development of the framework content:
 - ✓ Review of national and international patient engagement resources in health care and research; and
 - ✓ A series of interviews with the leads, project managers as well as patient partners of BC Renal committees and key activities.
- ❖ Input from stakeholders such as The Kidney Foundation of Canada—BC & Yukon Branch and other provincial partners in patient and Indigenous engagement was incorporated.

Results

Benefits of Patient Engagement

Kidney care professionals identified the following benefits:

- Adding unique perspectives and expertise
- Focusing effort on what matters most
- Advocating collectively for new therapeutics and resources
- Enhancing accountability in advancing person- and family-centred care

Our patient partners identified the following benefits:

- Understanding how health professionals and patients can work together in the kidney health system
- Meeting others who are impacted by kidney disease
- Empowering to be part of the kidney care planning process
- Strengthening ability to promote awareness of kidney disease.

Results

BC Renal Patient & Family Engagement Framework

What:

A guide for patient and family engagement in BC Renal committees and activities

Why:

Having patients and families as active partners supports optimal patient outcomes and experience.

How:

Five principles guide every step of our engagement process.

Seven-Step Cycle of Patient and Family Engagement



Our engagement opportunities generally take place across these domains:



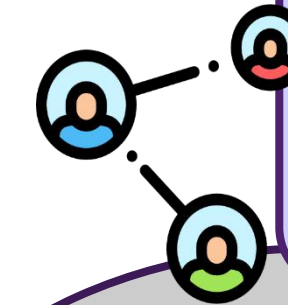
And across the International Association for Public Participation (IAP2)'s Spectrum of Public Participation

To download the BC Renal Patient & Family Engagement Framework or infographic:



Results

Feedback on the development process:



This was a great experience for me to be involved in. Although it was a lot of information to take in, I learned so much.
- Patient partner

This has been the most satisfying experience because it has been all about providing patients and families a voice within the interdisciplinary team. A large gap, within what a grand step, as they are the only reason we are all here to begin with...."
- Kidney care professional

Conclusions

- ❖ The collaborative development process reflects our commitment to involve patients and families as active partners and facilitates culture change for integrating patient and family engagement in kidney care and research.
- ❖ It primes the integration of effective partnerships among health professionals, patients and families to optimize patient outcomes and experiences.

Acknowledgements

This work is funded by BC Renal. We would also like to thank Stacey Richardson for design assistance.



Contact information

E-mail: patientengagement@bcpra.ca | Tel: 604.875.7340