



PROVINCIAL STANDARDS & GUIDELINES



Nutritional Supplement Policy

Updated July 2024

Developed by the BC Renal Pharmacy Services Committee

Table of Contents

1.0 Purpose	1
2.0 General Scope and Nutritional Supplement Criteria.....	1
3.0 Length of Supplementation	2
4.0 Ordering Process	2
4.1 Delivery Options.....	2
4.2 Damages and Short Shipments	2
4.3 Special Orders of Non-Formulary Products	2
Appendix A: Nutritional Supplements Formulary	3
Appendix B: BC Renal Nutritional Supplement Ordering Process for Registered Dietitians	4

IMPORTANT INFORMATION

This BC Renal guideline/resource was developed to support equitable, best practice care for patients with chronic kidney disease living in BC. The guideline/resource promotes standardized practices and is intended to assist renal programs in providing care that is reflected in quality patient outcome measurements. Based on the best information available at the time of publication, this guideline/resource relies on evidence and avoids opinion-based statements where possible; refer to www.BCRenal.ca for the most recent version.

For information about the use and referencing of BC Renal guidelines/resources, refer to
BCRenal.ca/resource-gallery/Documents/About%20BCR%20Guidelines.pdf

1.0 Purpose

The intention of this Policy is to support nutritional health and to prevent and ameliorate malnutrition related to chronic kidney disease (CKD) in residents of British Columbia who meet the eligibility criteria outlined below.

2.0 General Scope and Nutritional Supplement Criteria

Malnutrition is common among people living with CKD stages 3 to 5. Maintaining and improving nutritional status can be a challenge and it is often necessary to rely on nutritional supplements to optimize intake.

BC Renal funds nutritional supplements for patients with CKD who are registered with BC Renal (PROMIS) and who are followed by a primary renal management centre (kidney care clinic, hemodialysis unit, home hemodialysis or peritoneal dialysis service, or post-transplant clinic). Patients who are followed in primary nephrology care are not eligible under this Policy as they are not followed by a renal program dietitian.

This Policy is intended for outpatient settings only and does not include patients who are hospitalized. Hospitalized patients are able to access supplements through the hospital's Food Services department.

Moreover, this Policy does not cover the cost of supplements for enteral (tube-feeding) formulas in an outpatient setting as these may be eligible for coverage through BC Ministry programs and home

enteral programs. Special considerations may apply in certain rare and exceptional cases.

Thickening products for patients with dysphagia fall outside of the scope of this Policy and coverage for these products is not available.

Non-formulary nutritional supplements may be covered if approved by BC Renal (please see Appendix B). Criteria for application for non-formulary nutritional supplements include digestive intolerance to all suitable formulary options, dietary restrictions, and severe food allergies. Patient preference is not a criterion for application for non-formulary products.

A nutrition assessment by a registered dietitian (RD), which may include a subjective global assessment (SGA), is required to determine a patient's suitability for nutritional supplement initiation. Nutritional supplements can only be prescribed by a renal program dietitian through partnerships with specific pharmacies across BC.

A nutritional supplement may be started in the following situations:

1. A food-first approach to maximize nutrition has been attempted and deemed insufficient (patient not able to meet nutritional requirements through oral intake or continuously losing weight despite food-first therapy)
2. Unintentional weight loss of 5-10% has occurred in the past 1-6 months
3. Oral intake is inadequate to meet nutritional requirements

4. SGA score indicates malnutrition risk
5. A pediatric patient is unable to achieve an appropriate height and/or weight percentile for age

3.0 Length of Supplementation

The appropriate duration of supplementation is determined by the RD and will depend on the patient's baseline nutritional status and response to nutrition therapy. The RD performs regular monitoring and evaluation of the patient (at least every 3–6 months) to assess the need for ongoing supplementation. Supplements can be reordered as required as part of the patient's nutrition care plan.

4.0 Ordering Process

Where possible, patients should be given samples of nutritional supplements to ensure acceptance and tolerance before orders are placed. Distribution of samples is determined by each pharmaceutical company's policy.

The process for ordering nutritional supplements is shown in Appendix B.

Supplements can be ordered in quantities and frequencies determined by the RD. A nutrition reassessment is required at least every 3-6 months to determine whether the prescription requires adjustment.

A list of items available on the nutritional supplement formulary and indications for use are found in Appendix A.

4.1 Delivery Options

The patient has the choice of one of the following delivery options:

1. Delivery to home address or residence
2. Pick up from Renal Pharmacy
3. Delivery to a dialysis unit (if appropriate for the unit) or alternative address

The RD will inquire about the preferred delivery option for the patient and indicate this on the order form.

4.2 Damages and Short Shipments

If there are any concerns related to the handling of nutritional supplement orders by a Renal Pharmacy, RDs are encouraged to contact the BC Renal Business Operations Contracts team at contracts@bcrenal.ca.

4.3 Special Orders of Non-Formulary Products

RDs can make special requests for non-formulary nutritional supplements in rare and extenuating circumstances only. Please refer to Appendix B for details.

Appendix A: Nutritional Supplements Formulary

BC Renal approves the following nutritional supplements:

Available to order through **Abbott Laboratories:**

Product Name	Number	Indications for Use
Ensure Clear Apple 24 x 237 ml tetra	6490313	For patients requiring a clear fluid supplement
Ensure Clear Mixed Berry 24 x 237 ml tetra	6490013	For patients requiring a clear fluid supplement
Ensure Plus Vanilla 24 x 235 ml bottles	6891013	Higher potassium tolerance; moderate calorie and protein needs
Ensure Plus Strawberry 24 x 235 ml bottles	6891213	Higher potassium tolerance; moderate calorie and protein needs
Ensure Plus Chocolate 24 x 235 ml bottles	6891113	Higher potassium tolerance; moderate calorie and protein needs
Ensure Plus Butter Pecan 24 x 235 ml bottles	6891413	Higher potassium tolerance; moderate calorie and protein needs
Suplena Vanilla 24 x 235 ml cans	6208813	Lower potassium tolerance; lower protein needs; moderate calorie needs; suitable for persons not on dialysis
Ensure Advance Vanilla 24 x 235 ml bottles	6631113	Higher potassium tolerance and protein needs; moderate calorie needs
Ensure Advance Chocolate 24 x 235 ml bottles	6631213	Higher potassium tolerance and protein needs; moderate calorie needs
Glucerna Mixed Berry 24 x 237 ml bottles	5365813	Blood sugar control needed; higher potassium tolerance; moderate protein and calorie needs
Glucerna Vanilla 24 x 237 ml bottles	5365513	Blood sugar control needed; higher potassium tolerance; moderate protein and calorie needs
Glucerna Strawberry 24 x 237 ml bottles	5365713	Blood sugar control needed; higher potassium tolerance; moderate protein and calorie needs
Glucerna Chocolate 24 x 237 ml bottles	5365613	Blood sugar control needed; higher potassium tolerance; moderate protein and calorie needs
Nepro Vanilla 24 x 237 ml bottles	5362413	Lower potassium tolerance; higher protein and calorie needs; suitable for persons on dialysis
Glucerna 1.2 24 x 237 ml tetra	6491813	Blood sugar control needed; higher potassium tolerance; higher protein needs; moderate calorie needs

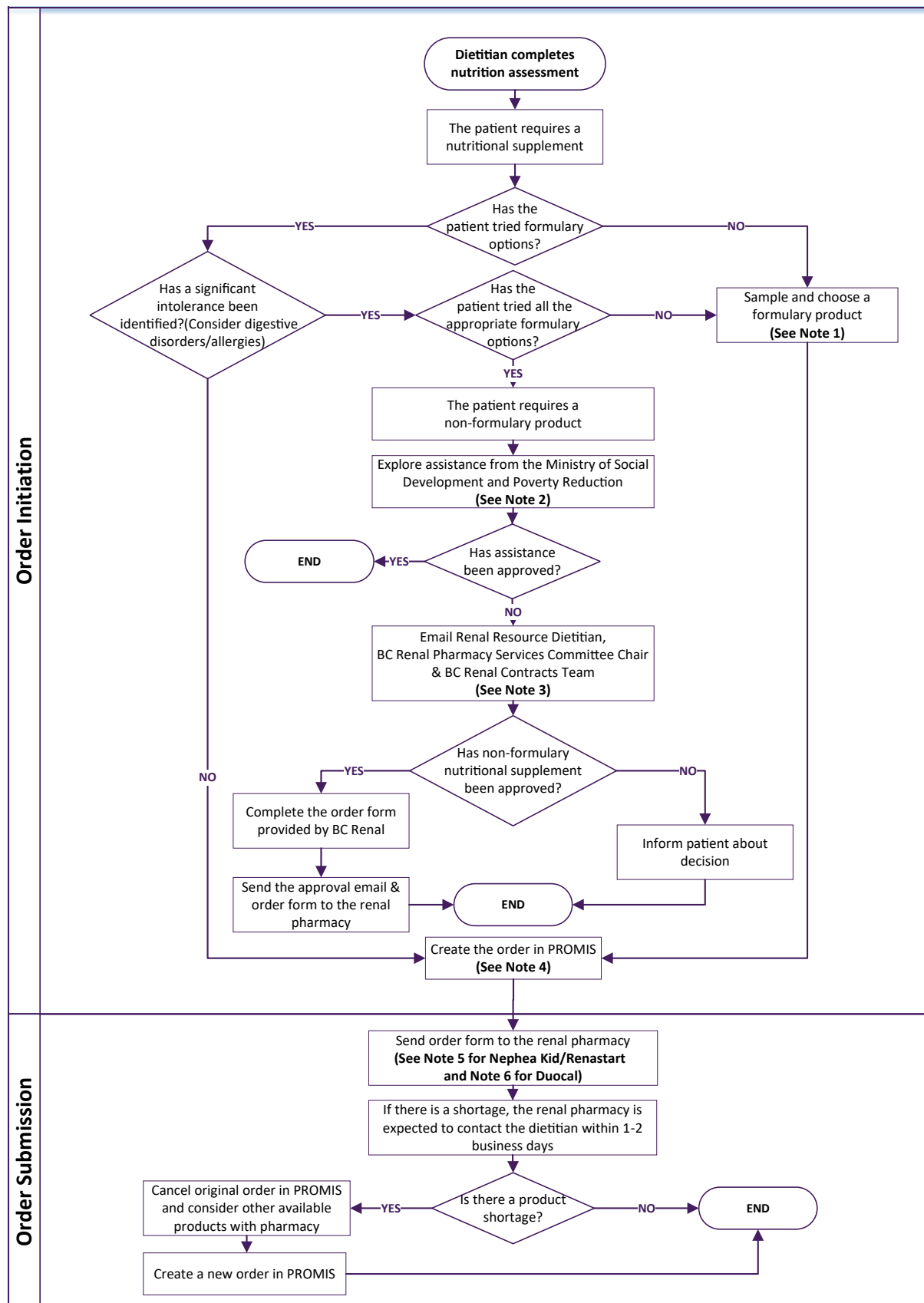
Available to order through **Cardinal Health:**

Product Name	Number	Indications for Use
Novasource Renal 24 x 237 ml tetra	NN12142257	Lower potassium tolerance; higher protein and calorie needs; suitable for persons on dialysis
Beneprotein 1 x 227 g tub	NN121151202	Higher protein needs

Pediatric Formulas:

Product Name	Indications for Use
Nephea Kid	Pediatric Formula
Renastart	Pediatric Formula
Duocal	Pediatric Formula

Appendix B: BC Renal Nutritional Supplement Ordering Process for Registered Dietitians



Additional Notes

Note 1

The BC Renal Nutritional Supplements Formulary (Appendix A) is comprehensive. Non-formulary products can be considered in exceptional circumstances.

Note 2

Explore Ministry STNS & MNS Route:

[STNS Route: \(Short Term Nutritional Supplement\)](#)

[MNS: \(Monthly Nutritional Supplement\)](#)

Note 3

Renal Resource Dietitian: Dani Renouf DRenouf@providencehealth.bc.ca

BC Renal Pharmacy Services Committee Chair: Dan Martinusen Dan.Martinusen@islandhealth.ca

BC Renal Contracts Team Contracts@bcrenal.ca

Include information on:

1. Confirmation that Ministry assistance has been explored.
2. Rationale for request.
3. Name and flavour of Non-formulary product requested.
4. Servings/Quantity per month.
5. Duration of treatment.
6. Name of Renal Pharmacy

Upon review and approval of the request, an email will be sent to BC Renal Business Operations Contracts Department at contracts@bcrenal.ca so that this team can provide pharmacy pricing and ordering information to the Renal Pharmacy.

The RD will receive an order form directly from BC Renal Business Operations Contracts to complete the process.

Note 4

The process for ordering nutritional supplements is as follows:

- The RD completes a nutrition assessment and determines that the patient meets the criteria for admission into and continuation in the nutritional supplement program.
- The RD completes the nutrition supplement order form in PROMIS and verifies that the patient's delivery address is correct.
- The RD sends the nutrition supplement order to the Renal Pharmacy closest to the patient's home (exceptions may apply).
- If the order was completed in error, but not sent to the pharmacy, the RD can mark the order status in PROMIS as VOID.
- If the order was sent to the pharmacy in error, the RD will notify the pharmacy and mark the order status in PROMIS as CANCELLED.

In most cases, nutrition supplement orders are sent to the Renal Pharmacy closest to the patient's home. However, in some cases, supplements can be ordered through a central delivery location or pharmacy such as Macdonald's Prescriptions, as shipping costs may be lower than those available to pharmacies located closest to the patient's residence; regional variations in this process may exist.

Note 5

Ordering processes for Nephea Kid and Renastart fall outside of the standard Nutrition Supplement ordering system. Contact Nephrology RD at BC Children's Hospital for further details.

Note 6

When ordering Duocal, please refer to the following information:

- The RD MUST fax the order directly to the Montreal offices of SHS Medical — North America at (514)745 - 6625, Attention: Nancy Moore, Canadian Business Manager. Please be advised that Community Pharmacies are not involved in Duocal orders.
- On the order form the RD will include the customer number [07-BC Renal].
- PLEASE NOTE that SHS Medical requires at least 36 hours for delivery lead-time.