

AN INTRODUCTION TO CANN-NET – CANADIAN KIDNEY KNOWLEDGE TRANSLATION AND GENERATION NETWORK

Brendan Barrett¹, Rita Suri², Steve Soroka³, Susan Samuel⁴, Mike Zappitelli⁵, Joanne Kappel⁶, Manish Sood⁷, Amit Garg⁸, Louise Moist⁹, William Clark⁹, Brenda Hemmelgarn¹⁰, Scott Klarenbach¹¹, Selina Omar Allu¹⁰, Adeera Levin¹²

¹Faculty of Medicine, Memorial University, St. John's, NL, Canada, ²University of Montreal, Montreal, QC, Canada, ³Division of Nephrology, Dalhousie University, Halifax, NS, Canada, ⁴Department of Paediatrics, Nephrology, Alberta Children's Hospital, Calgary, AB, Canada, ⁵Department of Paediatrics, Nephrology, Montreal Children's Hospital, Montreal, QC, Canada, ⁶Division of Nephrology, University of Saskatchewan, Saskatoon, SK, Canada, ⁷Ottawa Hospital Research Institute, Ottawa, ON, Canada, ⁸McMaster University, Hamilton, ON, Canada, ⁹University of Western Ontario, London, ON, Canada, ¹⁰University of Calgary, Calgary, AB, Canada, ¹¹University of Alberta, Edmonton, AB, Canada, ¹²St. Paul's Hospital, Vancouver, BC, Canada

BACKGROUND: Patients with chronic kidney disease (CKD) do not always receive care consistent with guidelines, in part due to complexities in CKD management, lack of randomized trial data to inform care, and a failure to disseminate best practice. At Horizon's 2015 (a conference of key stakeholders in kidney disease), attendees noted, among other priorities, two main issues; (i) the impact of CSN guidelines was attenuated given limited formal linkages between the CSN Clinical Practice Guidelines Group, kidney researchers, decision makers and knowledge users, and (ii) further knowledge was required to guide care in patients with kidney disease. The idea for CANN-NET, funded in 2011 by CIHR, came from this meeting, and is a collaboration between Canadian kidney disease guideline producers, knowledge translation specialists and knowledge users. Given the urgent need for new knowledge, CANN-NET brings together a national group of experienced Canadian researchers to address knowledge gaps by coordinating and executing multicentre randomized trials.

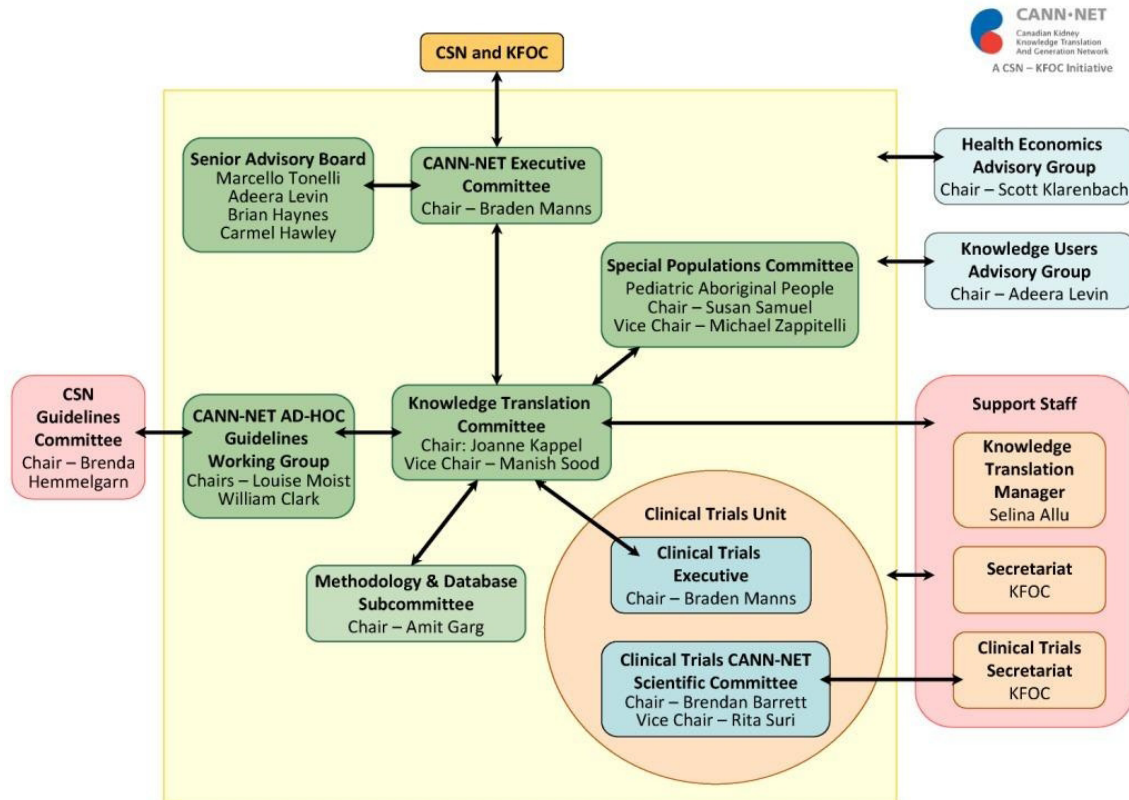
OBJECTIVE: CANN-NET is a pan-Canadian network established in partnership with CSN, the Kidney Foundation of Canada and other professional societies to improve the care and outcomes of patients with and at risk for chronic kidney disease by linking kidney researchers with relevant knowledge users to improve the care and outcomes of patient with, and at risk for, CKD through knowledge dissemination.

The work plan:

- Link CSN and CANN-NET clinical practice guidelines with relevant knowledge users
- Ensure best practice for patients with CKD through knowledge dissemination to knowledge users
- Use existing laboratory and administrative databases to track effectiveness of KT activity to favorably impact process of care and clinical outcomes for CKD patients
Identify knowledge gaps in kidney disease that can be addressed through randomized trials facilitated by a collaborative network of Nephrology researchers

Committee structure and governance:

CANN-NET reports to the CSN and KFOC, and has seven working committees (Figure).



Future work: CANN-NET looks forward to working with collaborators across Canada to improve care and outcomes for people with kidney disease.